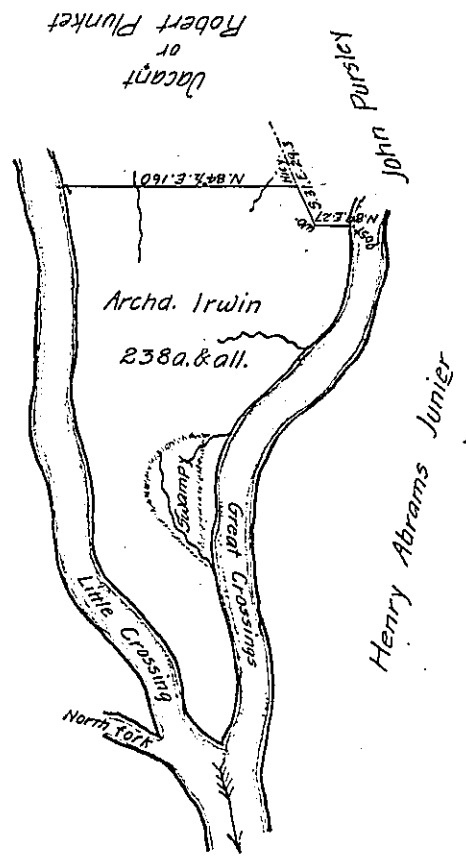


*Courses & Distances from stances  
down the River*

- N. 18 $\frac{1}{2}$ . w. 66.5
- N. 11 $\frac{3}{4}$ . E. 19.
- N. 6 $\frac{3}{4}$ . w. 24.1
- N. 4. w. 13
- N. 6 $\frac{1}{4}$ . w. 20.6
- N. 5 $\frac{1}{2}$ . w. 13.2
- N. 13 $\frac{1}{4}$ . w. 13.6
- N. 24. w. 27.3
- N. 9 $\frac{1}{2}$ . w. 58.4
- N. 35. w. 12
- N. 52 $\frac{3}{4}$ . w. 22
- N. 46 $\frac{1}{2}$ . w. 10.2
- N. 36 $\frac{1}{2}$ . w. 38.8
- N. 16. w. 21.5
- N. 8 $\frac{1}{4}$ . w. 10
- N. 16 $\frac{1}{4}$ . w. 10
- N. 45. w. 10.7
- N. 67 $\frac{1}{2}$ . w. 27.7 point

C192-77

James Spencer



- Up the River*
- S. 8. w. 26
  - S. 4. E. 22.7
  - S. 17 $\frac{1}{4}$ . E. 64
  - S. 4. E. 42
  - S. 7. E. 31
  - S. 17. w. 28
  - S. 39. w. 100
  - S. 3. w. 34
  - S. 24 $\frac{1}{2}$ . w. 19.5
  - S. 5. E. 19.8 post  
Corner of John Pursley

*Note, the lines contain but 236a.29 ps.  
the Residue is + to account for Curves,  
inconvenient following A. McClean  
D.B.E.S.G.*

*Situate at the three Forks of Turkey foot—in Turkey foot Township Bedford County & Surveyed the 7th. and 8th. days of April 1790. In Consequence of <sup>an</sup> Order of Survey granted to Archibald Irwin No. 304 Dated the 3d. day of April 1769. And by Special direction to execute the same dated 11th. February 1790.*

*pr. Alexander McClean Deputy*

*To ~~John~~ Daniel Brodhead Esquire  
Surveyor General*

*IN TESTIMONY that the above is a copy of the original remaining on file in the Department of Internal Affairs of Pennsylvania, made conformably to an Act of Assembly approved the 16th day of February, 1833, I have hereunto set my Hand and caused the Seal of said Department to be affixed at Harrisburg, this*  
*twenty-first day of September 1905*

*Joseph P. ...  
Secretary of Internal Affairs.*